



# Immanuel Learning Center

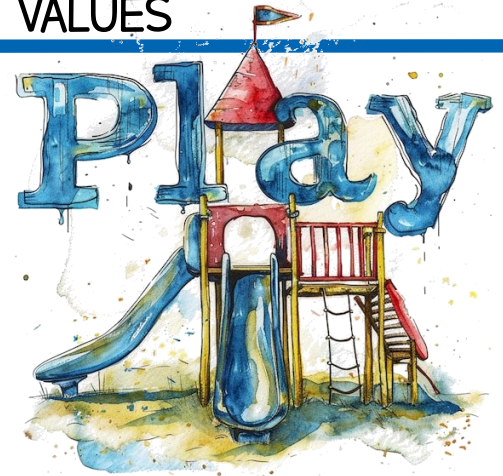
Maintaining a developmentally appropriate and challenging, yet achievable program.

## A Place to...

- Foster a friendship with Jesus through Bible stories, singing and prayer.
- Learn cooperation and participation with individuals and groups.
- Have the opportunity for each child to learn at their own pace.
- Learn language skills.
- Practice acceptable behavior when expressing emotions.
- Promote independence and initiative when solving problems.
- Improve motor coordination through supervised physical activity.
- Enjoy art and music experiences.

ILC Preschool is a Christian school offering classes for young children. We are a ministry that helps children develop, spiritually, physically, socially and emotionally in preparation for continuing education. We encourage the development of self-discipline, a good self image, curiosity and enthusiasm for learning. We feel that the education of children requires cooperation and communication between the school and family.

## VALUES



## OUR SCHOOL

## PRESCHOOL CLASSES & PROGRAMS

Our Preschool program accepts children ages two-five and they must be independent in the bathroom, with the exception of our two-year-old class. All of our classes accept ongoing registration throughout the year. Our program starts in September and runs through the second week in June.

### Class Sessions and times are as follow:

|   |          |                   |                  |
|---|----------|-------------------|------------------|
| 1 day a week (2 yr. old class)<br>Co-Op style with adults remaining on campus | W        | AM 9:30-11:30 am  |                  |
| 3 days a week AM & PM Classes<br>Age 3 before August 31                       | T-W-Th   | AM 9:00-11:30 am  | PM 12:15-2:45 pm |
| 4 days a week: AM & PM PreK   | M-T-W-Th | AM 9:00-11:30 am  | PM 12:15-2:45 pm |
| Lunch Bunch: drop in or monthly   | T-W-Th   | 11:15 am-12:30 pm |                  |

Our class size is limited to 10 students in the 2 yr. old class, 14 students in the three day program and 16 students in our four day PreK classroom. All classrooms have a teacher and a full time teaching assistant. Our professional staff is carefully selected based on their educational background, classroom training, teaching experience and sensitivity to the individual needs of young children. Class placement is at the discretion of the Preschool Director.



## TUITION & FEES

The following items are required at the time of registration:

- **Completed Online Registration**—available online at [oslc.com](http://oslc.com). Under the preschool tab: look for PUYALLUP Campus
- **Current Immunization Records.**
- **Non-Refundable Registration Fee—\$100.00**
- **Supply/Activity Fee—\$125.00**

All tuition and fee payments are made through our Brightwheel app in ten(10) equal monthly payments. There are no discounts for the one time registration fee or supply and activities fees. Processing fees will be passed on to the payer.

### Tuition cost:

- 2 yr. old program \$1,000.00 per year (Oct-May) or \$125.00/M
- 3 day program \$2,750.00 per year or \$275.00/M
- 4 day PreK program \$3,250.00 per year or \$325.00/M

### Discounts:

- 5% for multiple children (discount is taken on second student)
- 5% for prepayment of yearly tuition (must be paid prior to the start of



## CAMPUS TOURS

In order to maintain a safe and uninterrupted classroom environment, tours are by appointment only and limited to two adults. Campus tours are offered M-Th 11:45-12:05 pm and M-W after school from 3:00-4:00 pm.

## ENROLLMENT

Enrollment for our current school year is ongoing, if we have space available. All fees will be prorated at the time of enrollment. You can find our registration application online at [www.ilcpuyallup.org](http://www.ilcpuyallup.org) under the Ministry tab for preschool.

We conduct a three phase registration based on a first come first served basis.

- Phase 1: Priority enrollment: Currently enrolled families.
- Phase 2: Active church members and/or ANY preschool alumni. By our definition alumni families are any family that has been enrolled in our program, regardless of the time between enrolled children.
- Phase 3: New students/families can submit applications online anytime, however your registration will not generate new enrollment status until priority/alumni registration dates have passed and all paperwork/fees are submitted. Watch our website for registration dates.
- Registration starts in January.
- Watch our social pages for information about any open house events.





## LUNCH BUNCH

Looking for some more time on campus before or after your child's preschool class? Sign up for Lunch Bunch~ BYOL (bring your own lunch) and we will provide the fun! This program offering is intended to help kids further their independence and

prepare for kindergarten with lunch and recess transitions and new faces. Any downstairs AM or PM students of ILC can take advantage of this offering.

To attend Lunch Bunch, please register with a confirmation email or brightwheel message to the Preschool Director. If you would like this to be added on to your monthly classroom offering, please reach out so we can start planning for September. Lunch Bunch can also be used as needed, September thru May. Please note if fewer than 3 students are signed up for a particular day, Lunch Bunch will be cancelled.

Lunch Bunch Operating Times: **Tuesday, Wednesday, and Thursday**

**11:15am-12:30 pm.** AM class sessions will be dismissed to Lunch Bunch and PM class sessions will drop off for Lunch Bunch and delivered to classrooms after.

### 2025-2026 Cost:

Daily Drop In- \$ 20.00/per drop in

Monthly - \$100.00/month

Reach out with any questions to [Michelle@oslc](mailto:Michelle@oslc) or through Brightwheel